






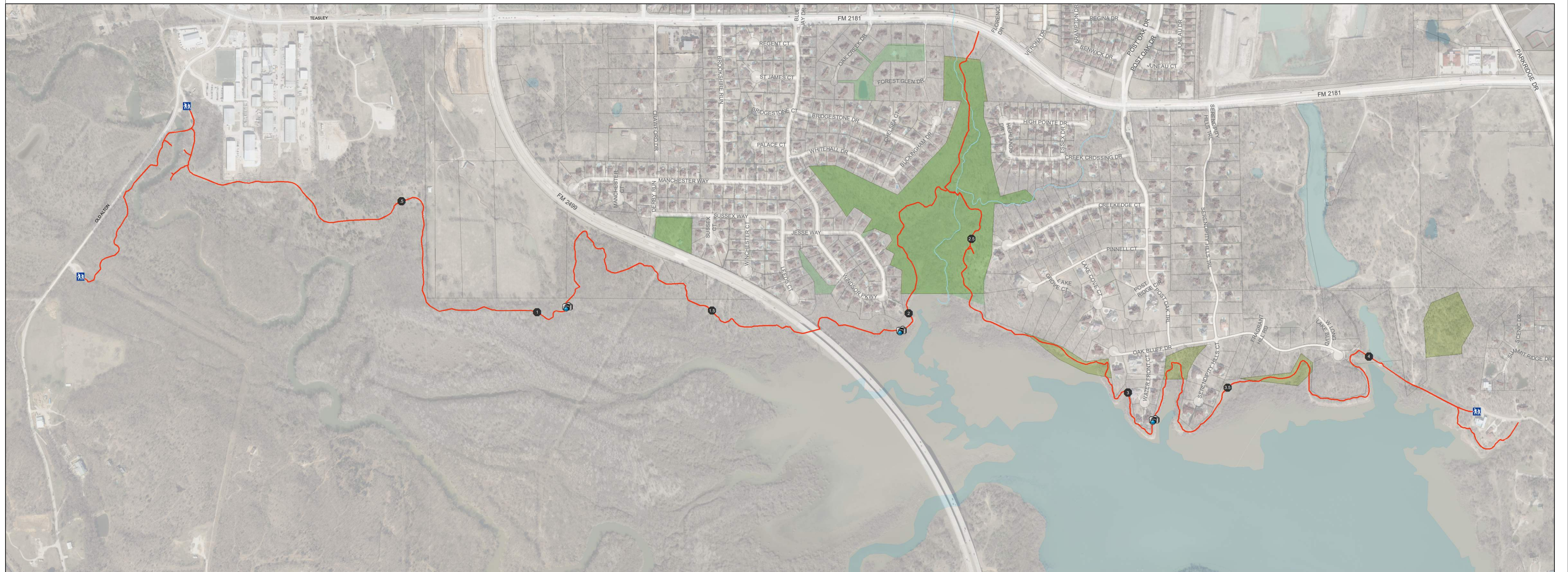
## Legend

Trail Points	Land Type
1	Forest
2	Forest
3	Forest
4	Forest
5	Forest
6	Forest
7	Forest
8	Forest
9	Forest
10	Forest
11	Forest
12	Forest
13	Forest
14	Forest
15	Forest
16	Forest
17	Forest
18	Forest
19	Forest
20	Forest
21	Forest
22	Forest
23	Forest
24	Forest
25	Forest
26	Forest
27	Forest
28	Forest
29	Forest
30	Forest
31	Forest
32	Forest
33	Forest
34	Forest
35	Forest
36	Forest
37	Forest
38	Forest
39	Forest
40	Forest
41	Forest
42	Forest
43	Forest
44	Forest
45	Forest
46	Forest
47	Forest
48	Forest
49	Forest
50	Forest
51	Forest
52	Forest
53	Forest
54	Forest
55	Forest
56	Forest
57	Forest
58	Forest
59	Forest
60	Forest
61	Forest
62	Forest
63	Forest
64	Forest
65	Forest
66	Forest
67	Forest
68	Forest
69	Forest
70	Forest
71	Forest
72	Forest
73	Forest
74	Forest
75	Forest
76	Forest
77	Forest
78	Forest
79	Forest
80	Forest
81	Forest
82	Forest
83	Forest
84	Forest
85	Forest
86	Forest
87	Forest
88	Forest
89	Forest
90	Forest
91	Forest
92	Forest
93	Forest
94	Forest
95	Forest
96	Forest
97	Forest
98	Forest
99	Forest
100	Forest

-  Mile Marker
  Trails
-  Photo
  Stream
-  Trail Head

Keep Corinth Beautiful	940-498-3243
Corinth GIS - Maps	940-498-3264

# Trail Photos

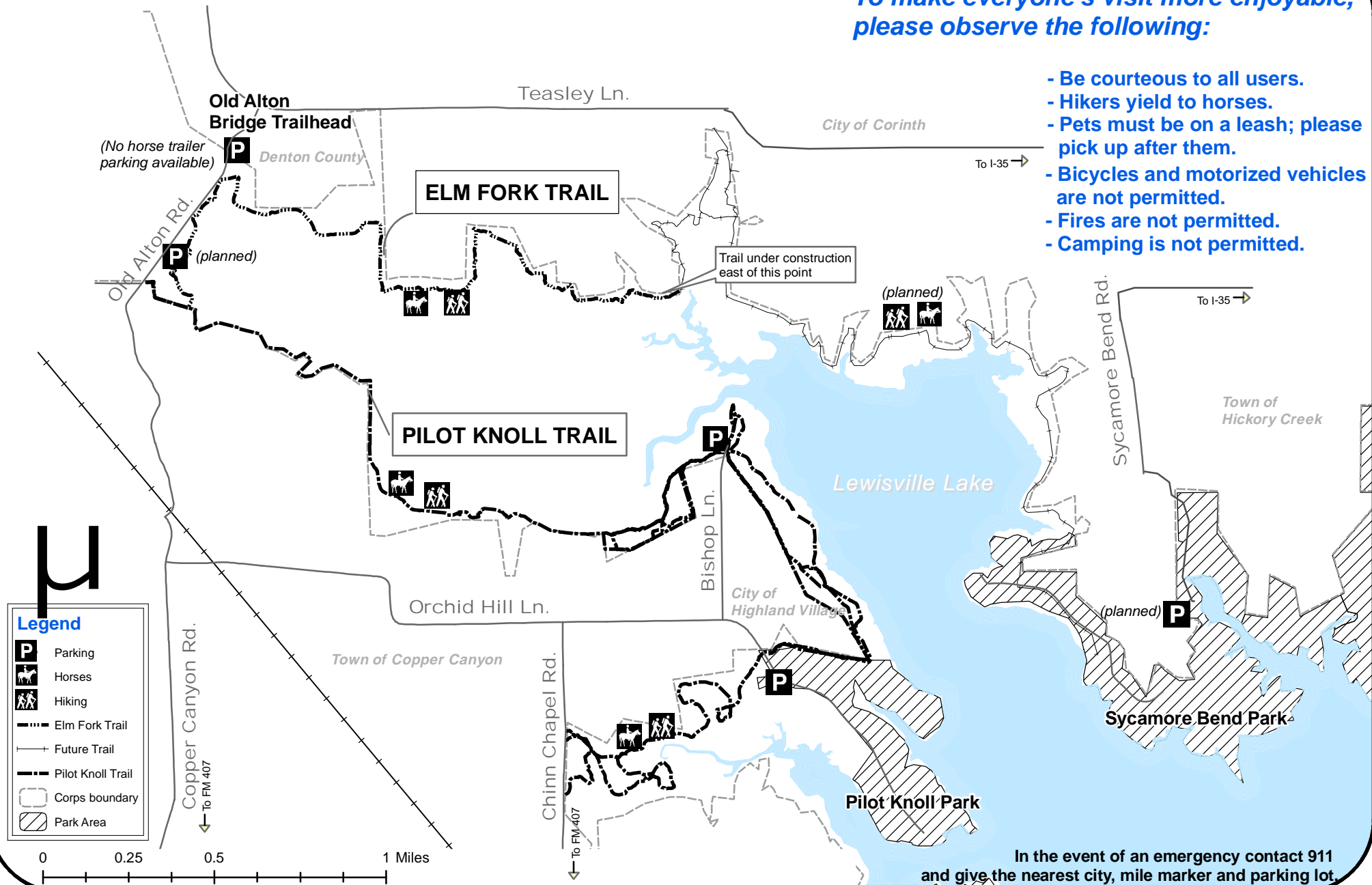




# Elm Fork and Pilot Knoll Horse and Hiking Trails

*To make everyone's visit more enjoyable,  
please observe the following:*

- Be courteous to all users.
- Hikers yield to horses.
- Pets must be on a leash; please pick up after them.
- Bicycles and motorized vehicles are not permitted.
- Fires are not permitted.
- Camping is not permitted.



These trails are made possible through a Challenge Partnership Agreement between the Town of Copper Canyon, City of Corinth, Town of Hickory Creek, the U.S. Army Corps of Engineers and the diligent work of many volunteers.

The U.S. Army Corps of Engineers has depicted this spatial data as a representation of the various geographic information gathered from multiple sources. This data should be viewed only as a representation of the data and should not be used for any other purpose. No guarantee is made by the U.S. Army Corps of Engineers regarding the accuracy or completeness of the data or their suitability for a particular use.

Thanks to Denton County Public Works - GIS Department for their kind assistance in developing this map4-08 ECT